


Heat Pumps

This guidance highlights some of the risks associated with the installation and use of heat pumps and steps that should be considered to help manage these risks.

RISK ADVICE LINE

Having read this guidance should you have any additional questions on this topic or other risk related matters, as a valued Ecclesiastical customer you can contact Risk Management Team on 01 619 0300 (Monday to Friday 9am – 5pm, excluding bank holidays)

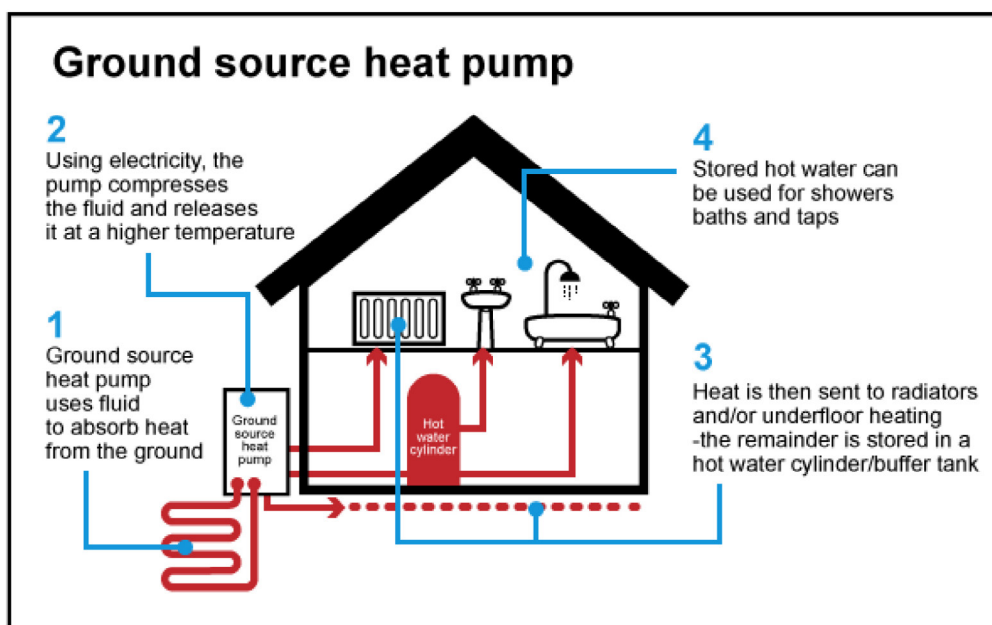
For queries about your policy cover or claims please contact your insurance broker. If you are a direct Church customer please call 01 619 0300 for policy queries or for claims.



As renewable energy technology develops, heat pumps are increasingly viewed as a green alternative to traditional forms of energy.

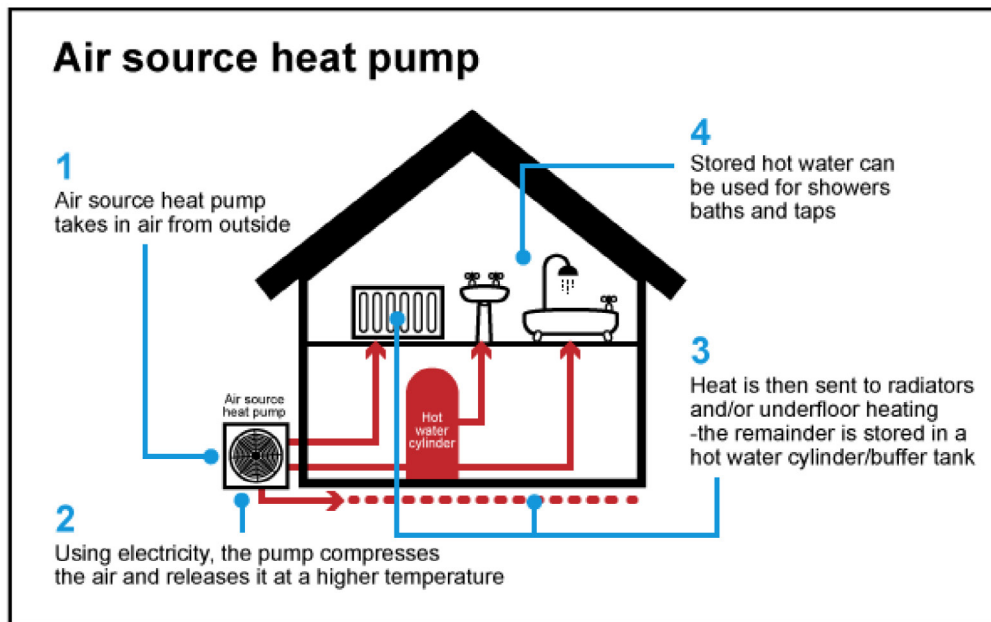
Ground source heat pumps

These use pipes which are buried outside to extract heat from the ground itself. This heat energy can then be used to power and heat radiators, under floor or warm air heating systems and hot water.



Air Source Heat Pumps

Also known as air to water heat pumps, these work in a similar way except that they extract heat from the outside air instead of the ground. This heat can then be used to heat radiators and under floor heating systems.



What you need to do

By adopting a sensible approach much can be done to ensure a heat pump works safely and efficiently to provide heat and hot water to your premises.

It is important to employ an expert to undertake a feasibility study. You should inform us that you are planning to install a heat pump at the earliest opportunity.

Our minimum expectation is set out below.

The installation

When considering the installation of heat pumps you should obtain professional advice, such as an IndependentSEAI Registered Technical Advisor.

The installer should provide written details of any other maintenance checks that need to be undertaken as well as an emergency guide. In the event of a pressure drop (indicating a possible leak), there should be a simple plan of action including contact numbers for the installer.

Maintenance

It is advisable to consult with the supplier for exact maintenance requirements before committing to installing a heat pump.

Regular self-inspection and a more detailed service/maintenance check by a professional installer annually is recommended. If a service is not undertaken this can lead to inefficient operation, increased running costs and possible equipment failure. All plant and equipment must be inspected, serviced/maintained as per the manufacturer's recommendations.

Self-inspection may include checks of the water pump, external pipes and fittings and electronics or checking that the air inlet grill and evaporator are free from leaves or other debris; removal of any vegetation/debris near the heat pump etc.

Areas associated with the heat pump equipment, including any heat exchanger etc. should be swept out and cleaned down at least weekly and all combustible waste removed.

You may be advised by the installer to check the central heating pressure gauge from time to time. If so, you should be shown how to do this. Also, isolation switches should be clearly labelled and located in an accessible position if possible.

It is recommended all work should be undertaken by an approved and qualified engineer .

Reducing the fire risk

Few fire risks have been identified.

Fire and general risk assessments completed for a workplace must include the hazards related to this equipment and precautions to ensure people are protected.

Relevant training (including refresher training) must be provided to staff and any volunteers operating in a workplace about the hazards and precautions required when using this equipment. It is important employers keep records of this training for future reference.

Helpful Information

<https://www.seai.ie/publications/Homeowners-Guide-To-Heat-Pump-Systems.pdf>

<https://www.electricireland.ie/residential/help/efficiency/installing-heat-pumps>

This guidance is provided for information purposes and is general and educational in nature and does not constitute legal advice. You are free to choose whether or not to use it and it should not be considered a substitute for seeking professional help in specific circumstances. Accordingly, Ecclesiastical Insurance Office plc and its subsidiaries shall not be liable for any losses, damages, charges or expenses, whether direct, indirect, or consequential and howsoever arising, that you suffer or incur as a result of or in connection with your use or reliance on the information provided in this guidance except for those which cannot be excluded by law. Where this guidance contains links to other sites and resources provided by third parties, these links are provided for your information only. Ecclesiastical is not responsible for the contents of those sites or resources. You acknowledge that over time the information provided in this guidance may become out of date and may not constitute best market practice.



Ecclesiastical Insurance Office plc is regulated by the Central Bank of Ireland.

Ecclesiastical Insurance Office plc Reg. No. 24869. Registered in England at Benefact House, 2000 Pioneer Avenue, Gloucester Business Park, Brockworth, Gloucester, GL3 4AW, United Kingdom. Registered Branch in Dublin, Ireland. Reg No. 902180. 2nd Floor, Block F2, EastPoint, Dublin 3. Authorised by the Prudential Regulation Authority and regulated by the Financial Conduct Authority and the Prudential Regulation Authority in the United Kingdom (Firm Reference Number 113848).